

Clever solar devices

Technical information



cleversd.com
info@clevesd.com
+34.644.677.311



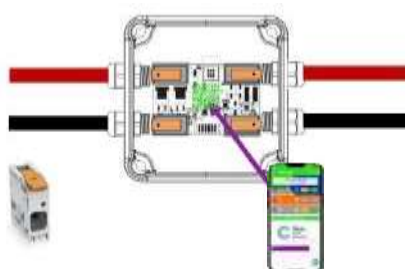
The Hardware

Our patented plug-n-play device has a compact size, similar to a credit card. It is installed inside an 11x11cm IP67 box that we provide with the electronics.



PLUG-N-PLAY installation

Warning: must connect the PV panel First.



The device is compatible with all different technologies and installation configurations.

e.g.: mono and polycrystalline modules, glasses and other PV products, central inverter, micro inverters.

"Plug-N-Play" and scan the QR code with the Clever DX Setup application that allows classifying each one of the panels by row, column and panel number according to the installer's consideration, depending on the installation's topology, and recording its GPS position.

Download our [Installation guide](#)

SPECIFICATIONS:

The PV module should comply with the following specifications:

- Maximum open circuit voltage: $V_{oc} < 60V$
- Maximum short circuit current: $I_{sc} = 15A$
- Maximum power: $P_{max} = 600W$

The minimum electrical characteristics needed are:

- Minimum voltage: 10V
- Minimum current: 0.5A
- Peak power needed while system is sending information: 150-300mW (depends on input voltage)

WIFI CONNECTIVITY:

The system require one standard WIFI access point.

The information sent is 1kB every 4 minutes per measured PV device.

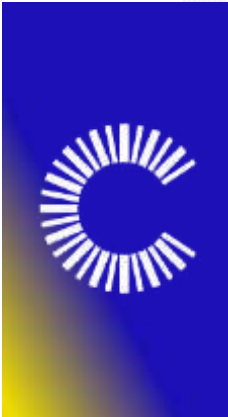


Information is sent to cloud using SSL connection trough port #80, #443 and #23. The data provided by measurement device is stored in the cloud server and it is cross-platform accessible. The communication is from inside network to outside, it doesn't require to modify potential firewalls or security that network installations could have.

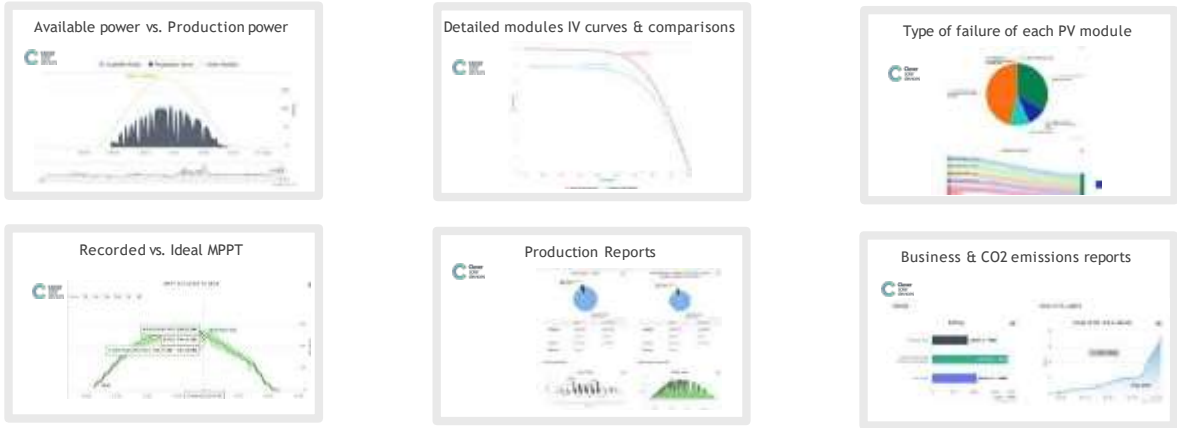
The Software

Our Propriety platform displays in a very comprehensible graphical way the full status of your fleet with PV module granularity. way the full status of your fleet with PV module granularity.

Complete Diagnosis of your PV plant in just 3-clicks.



PV PLANT DIAGNOSIS and BUSINESS REPORTS



...and more

More about Us

Find more details in our website:



Our partners and accomplishments



info@cleversd.com | +34 644 677 311

This document is exclusive, confidential and contains private information. The reading, retention, distribution or copy of this communication by anyone other than its recipient is prohibited.